

# PROFESSIONAL ADVISORS & FACULTY ADVISORS

*What is the difference?*

---

## PROFESSIONAL ADVISORS

---



- Are SEAS staff members who assist students with figuring out which courses fulfill degree requirements
- Introduce and help navigate students through DegreeMAP
- Help with necessary paperwork and other administrative tasks for course registration, dissertations, and graduation clearance
- Serve as the first point of contact for students regarding their degree requirements

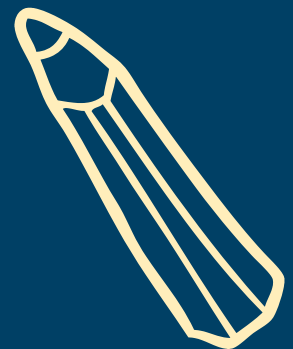
HOW TO CONTACT: Email [seasgrad@gwu.edu](mailto:seasgrad@gwu.edu)

---

## FACULTY ADVISORS

---

- Are faculty members from the student's department
- Give specific information on which classes to take based on the student's interests
- Help students with finding resources within their department, such as research funds and independent study options
- Provide information on internship opportunities in their respective research field



HOW TO CONTACT: You will receive your faculty advisor's name and contact information when you check in